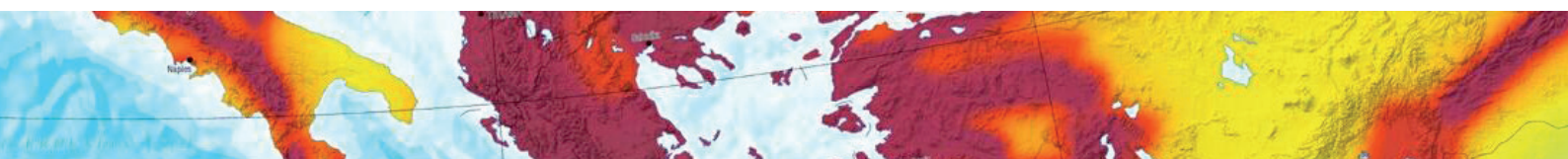
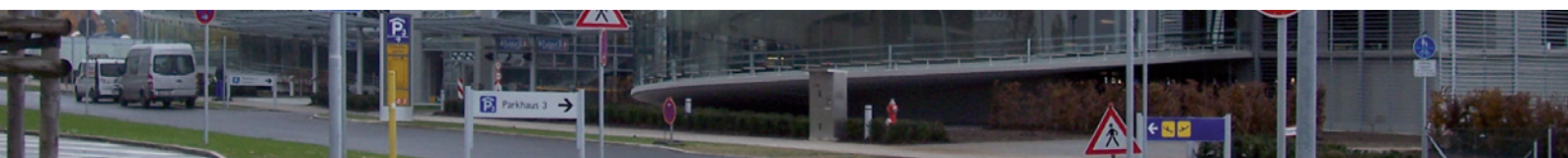


MIGUA Expansion Joint Systems: Details – the key factor.

Expansion joint profiles and
expansion joint systems for trend-setting
architecture and excellent civil engineering.



Quality.
Made in Germany.

MIGUA[®]

MIGUA. Market leader in Europe for more than 50 years.

MIGUA is completely focussed on expansion joint systems. Leading architects, designers and general contractors specify our products for national and international projects. We will gladly provide you with a list of references, on request.

MIGUA expansion joint systems are used from Abu Dhabi to Zurich providing protection, functionality and architectural excellence on a permanent basis.

They are used in many different building types, e.g. shopping malls, airports, exhibition halls, hospitals, industrial plants, storage facilities, car parks and pedestrian bridges. It is our passion to be innovative, to supply perfect quality and to develop solutions according to customer requirements.

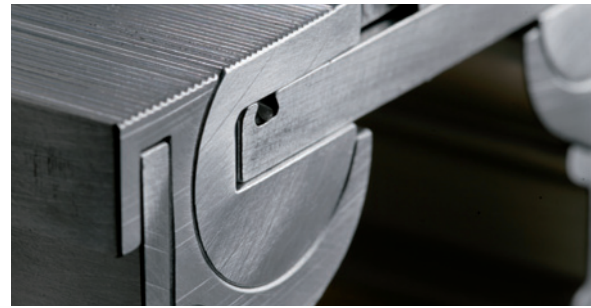


MIGUA Headquarters in Wuelfrath

Technology. Innovative from experience

Competence does not appear by chance. More than 10 million metres of MIGUA movement joint systems have, over decades, been installed worldwide to the satisfaction of architects, designers, builders and owners. We are leaders in technological development in Europe as witnessed by numerous patents and test certificates.

MIGUA engineers are, on an ongoing basis, designing and developing new profiles with enhanced characteristics which lead to time and cost saving installations. Through the use of special materials safety features are improved and stringent performance tests are conducted on all new products.

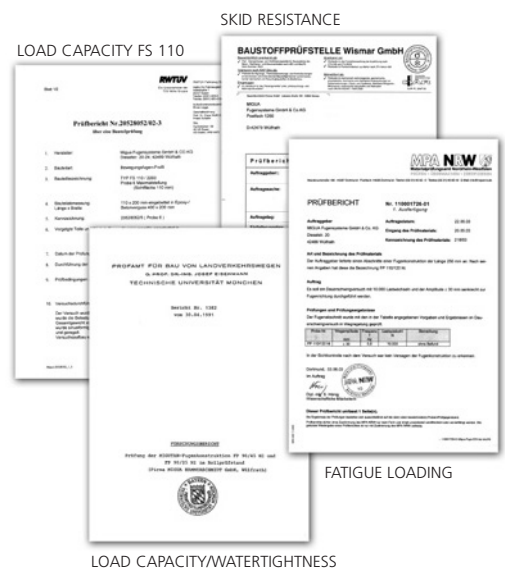


Quality. Made in Germany.

MIGUA products combine optimum solutions with excellence in design, high quality materials and safety features which are supported by our standard warranties. Quality makes the pre-condition for product safety. That is why MIGUA develop and manufacture in Germany. Only products on the highest standard achieve the necessary durability and allow required warranties.

Due to this reason MIGUA is able to offer such warranties.

Beyond the technical quality of our products the main target of the MIGUA quality management is the utmost satisfaction of our customers. Each operation and work step is described and will be recorded. From the first idea through research and development up to successful market launch. Just this makes MIGUA successful.



Solutions. Which work.

By ensuring the technical quality of our products MIGUA can attain its primary goal of complete customer satisfaction. New products are only launched after extensive tests and product and market research. Our products are supported by a national network of technical advisers and our world-wide partners and experienced international export team – available at all times to assist you.

MIGUA Movement Joint Systems are simply the best!



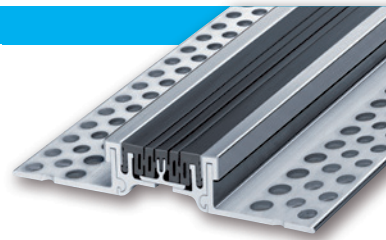
MIGUA offers a comprehensive product portfolio of expansion joint covers and systems with outstanding features.

Increasing architectural requirements as well as new construction materials and processes demand optimized expansion joint systems. For this reason, MIGUA is your experienced partner since we offer more than 750 different profiles for a wide range of applications. Our product range covers 5 application orientated product groups as detailed below. In addition to standard profiles our R&D engineers provide highly sophisticated solutions for special or non-standard applications. MIGUA provides solutions for extraordinary challenges.

MIGUTEC

Expansion joint profiles

- **reliable and proven product lines of expansion joint profiles**
for most purposes in internal and external areas
- **for floors**
- **for walls and ceilings**
- for fixing on concrete, in screed, plaster, but also finished surfaces
- most of the inserts are interchangeable at any time



MIGUTRANS

Heavy duty expansion joint systems

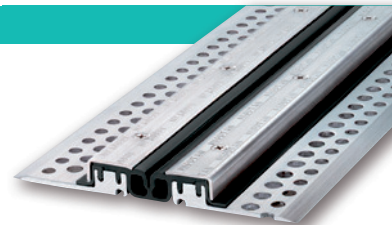
- **all-metal expansion joint systems**
in shopping malls, railway stations, airports, exhibition halls, storage facilities, hospitals, etc.
- **to be used by fork lift trucks and pallet trucks**
Official test certificate on request
- **hard wearing, maintenance-free, long lasting**



MIGUTAN

Watertight expansion joint systems for traffic

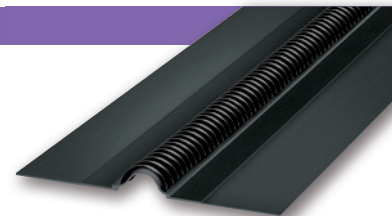
- **for usage in car parks, multi-storey car parks, underground car parks, swimming pool areas, pedestrian bridges, etc.**
- **guaranteed watertightness** - Official test certificate on request
- **available for hygienic requirements**
in large kitchens, hospitals, sport venues, etc.
- **Sealing on top surface**
Central insert replaceable at any time



MIGUPREN

Watertight expansion joint systems for roofs

- **corrugated jointing system and sealing strips for flat roofs and covered areas**
in underground car parks, tunnels, etc.
- **excellent bonding**
Official test certificate on request; hot-bitumen resistant
- **large, multi-directional movement**



MIGUMAX

Earthquake resistant expansion joint systems

- **designed for extremely high movements and large joint width**
- **easy installation**
- **all types of finishes**
- **flexible use**
- **heavy loads**



Expansion joint profiles and expansion joint systems
for trend-setting architecture and excellent civil engineering.
We offer solutions for ANY application.



STADIUMS



SHOPPING CENTERS



AIRPORTS



EXHIBITION HALLS



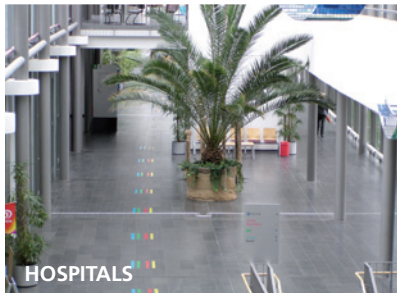
RAILWAY STATIONS



PEDESTRIAN BRIDGES



HOTELS



HOSPITALS



HANGARS



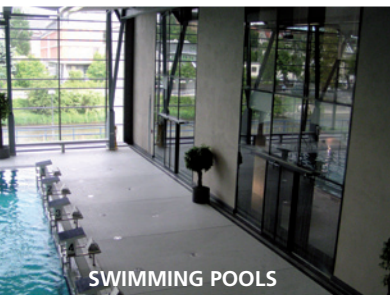
MULTI-STOREY CAR PARKS



CAR PARKS



FLAT ROOFS



SWIMMING POOLS



INDUSTRIAL HALLS



CANTEEN KITCHENS



UNDERGROUND CAR PARKS



COVERED AREAS



TUNNELS



THEATRES



HIGH-BAY WAREHOUSE

Our extensive reference list, or an extract, can be submitted on request,
either for your application or location.

MIGUA[®]

FUGENSYSTEME GMBH & CO. KG

PO Address: Postfach 1260 42479 Wuelfrath Germany
Address: Dieselstraße 20 42489 Wuelfrath Germany

Phone +49 20 58 774-0
Fax +49 20 58 774-48

e-Mail info@migua.de
Internet www.migua.com