

DEEPSEAL FLASH GROUT



DESCRIPTION

Deepseal Flash Grout is specially formulated for fast setting grouting in structural cracks and honeycomb concrete. It is cement based compound supplied in powder form and formulated from Portland cement, fine quartz sand, active chemicals and retarding agent which will not saponify under wet and alkaline conditions.

The chemical of Deepseal Flash Grout are capable of exchanging atom group with the nearby molecules in a similar way to ion exchange used in water softener and can in this way penetrate through the capillaries deep into the substrate and here they react as described above with the calcium oxides and hydroxides also popularly called 'Free Lime'

Structural cracks of concrete due to movement, which have settled since can also, be grouted with Deepseal Flash Grout. Cracks of 1/8 inches and above on wall that are leaking can also be grouted using the Deepseal Flash Grout. Deepseal Flash Grout is specially good for bonding physically and chemically in the capillaries of this cracks and honey combs in the concrete where it also expand and seals the cracks and honey combs.

Deepseal Flash Grout is a high strength grout specially formulated for grouting purposes. Due to its non-shrink properties it will not shrink when grouted into the pores and capillaries of concrete. When the pressure is achieved the water has evaporated the grout will remain in these pores and actually filled up the pores due to its expansion properties.

Further to this, there are chemicals in the grout that will actually crystallize inside these pores and capillaries, thus making this area waterproofed. The Deepseal Flash Grout has good flow and will actually flow into the crevices wherever it has been grouted. This will ensure that all crevices and fine cracks are all sealed and water proofed.

Tests have shown that a honey comb area of concrete grouted with Deepseal Flash Grout when cored out and tested has a higher strength than the original concrete.

PACKING & SHELF LIFE

Deepseal Flash Grout comes in packing of 25 kg/ bag. 12 months for Deepseal Flash Grout in unopened bags when stored under normal room conditions.

APPLICATION

For grouting honey combs on structural cracks Deepseal Flash Grout shall be mixed with water in volume ratio of 1 part Deepseal Flash Grout: 1.5 part of water

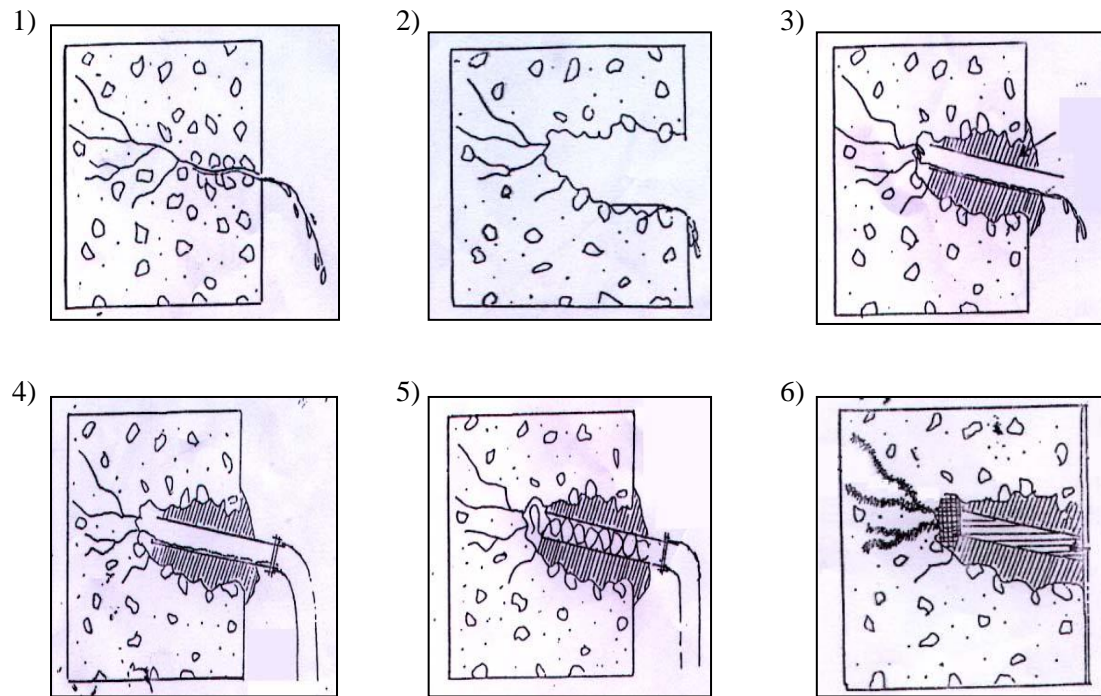
When mixing Deepseal Flash Grout it should be mixed in a pail not more than 20 litres at a time, water should be clean water at all time.

When mixing Deepseal Flash Grout it should be mixed with a slow drill or using a clean rod mixed it thoroughly. The mixing shall be done slowly if by drill, or by hand using rod shall be done in a slow motion to ensure the Deepseal Flash Grout is thoroughly mixed. After the mixing made sure that there is no lump in the mixture. Now the Deepseal Flash Grout is ready for grouting.

Put the suction pipes of the grout pump into the pail of mixed Deepseal Flash Grout and start the grouting process.

Deepseal Flash Grout is especially good for structural cracks and column as shown in the diagram below

Pressure Grout Using Deepseal Flash Grout



DeepSeal Waterproofing (M) Sdn Bhd (551588A)

Lot 2133-A & Lot 2133-B, Jalan Rawang Kundang, Sungai Bakau, 48000 Rawang, Selangor, Malaysia. Tel : +603-61880098 Fax : +603-61860098

E-mail: info@deepsealuk.com URL: <http://www.deepsealuk.com>

Deepseal is certified by:

MS ISO 9001:2008 Quality Management System