



## DEEPSEAL 1218 POLYURETHANE GROUT

# DEEPSEAL 1218 POLYURETHANE GROUT

## POLYURETHANE (PU) GROUT

### DESCRIPTION

Deepseal 1218 (1 part) PU Grout has excellent chemical resistance and good water resistance by hydroscopic pressure and is non-toxic once cured. GS 1218 contains no solvent and as such as non-flammable and easily applied. Deepseal 1218 is a single part PU Grout reacts with the water once injected into leaking crack or point to form expanded pressurized closed cell foam to contain water leakage. Deepseal 1218 gel time may be adjusted with a certain percentage of Catalyst.

### PROPERTIES

Appearance	:	Dark Brown
Toxicity	:	Non-Toxic

### USES

- Concrete Slab
- Water Tank Structure
- Construction Joint
- Basement Wall
- Underground Tunnel

### APPLICATION

1. Drill holes at 100 to 450mm intervals along the side of leaking joint or crack, at 45° angle.
2. Insert the Packers into the 16, diameter holes and tighten securely.
3. Using a clean and dry bucket, pour in the PU Grout and add the Catalyst gradually stir well.

4. Injection using electric drilled grout pump, ensuring that the crack is filled. The material must be visible during the initial set stage (yellow colored expanding foam). In the center of filling vertical cracks or joint, commence grouting from the bottom. In the case of horizontal crack, grout from either side.
5. Allow the grout to cure for 24 hours before removing all the packers. Finally plug all holes with a suitable mortar.
6. Clean the machine with non-flammable solvent before and after used.

### POLYURETHANE INJECTION PUMP

Polyurethane Injection Pump is light weight, electrically operated high pressure piston pump which is suitable for any single component chemical grouts.

### SPECIFICATION

No	Description	Result
1	Electric Drill @ 220V 400W	2600rpm
2	Max Pressure	450bar
3	Output @ 2600rpm	1.15litres/min
4	Dimensions	300 x 180 x 490mm
5	Weight including Drill	8.0kg

### TECHNICAL PHOTO OF APPLICATION DEEPSEAL 1218 POLYURETHANE GROUT SYSTEM



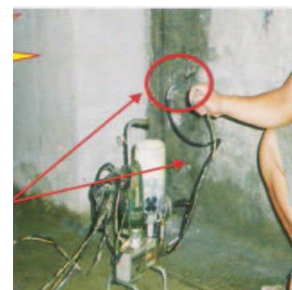
Drilling Holes



Insert Packer



Crack Injection Using Electric Pump





## DEEPSEAL 1218 POLYURETHANE GROUT

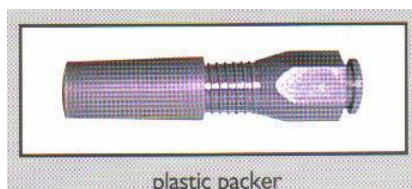


(PU Injection Pump)



(Packers)

### TYPE OF PACKERS



plastic packer



steel packer



Brass Packer

### PACKAGING

Deepseal 1218 PU Grout is 1 part, which as below:-  
Deepseal 1218 (PU Grout): 25kg/ pail

### SHELF LIFE

12 months from the date of manufactured

### HEALTH & SAFETY

It is recommended that the applicator wears a safety goggles and gloves. Avoid prolonged contact with exposed skin, and keep away from mouth and eyes. In case of skin contact, wash areas with soap and water. If contact with eyes, rinse thoroughly with clean water. Seek medical attention immediately if irritation persists.

### STORAGE

Indefinite, under good storage conditions and in undamaged containers.

This material is subject to damage by frost and should be stored at temperatures between 5°C to 40°C.

### Guarantee

The information contained in this leaflet is based on our experience and technical knowledge, obtained through laboratory testing and from bibliographic material. DEEPSEAL reserves the right to introduce changes without prior notice. Any use of this data beyond the purposes expressly specified in the leaflet will not be the Company's responsibility unless authorized by us. Our guarantee covers exclusively the quality of the manufactured product. We will not accept any responsibility exceeding the value of the purchased product.

**Deepseal Products (M) Sdn Bhd**, Lot 5 & 7, Jln 35/10A, Taman Perindustrian IKS, Mukim Batu Caves,  
68100 Kuala Lumpur, Malaysia. Tel : 603-61882298 Fax : 603-61861298  
E-mail : [enquiries@deepsealuk.com](mailto:enquiries@deepsealuk.com) URL: <http://www.deepsealuk.com>  
Deepseal is certified by  
MS ISO 9001:2008 Quality Management System  
ISO 14001:2004 Environment Management Systems